



Partner Certification and ATE Summary



Become a Gauzy Certified Partner

Gauzy offers Glass Processors, Fabricators, Installers and industry professionals the unique opportunity to be our Certified Partner.

As a Certified Partner, you will expand your portfolio with disruptive, innovative technologies, that will increase your position, competitive advantage and share in the market.

We are committed to assisting partners every step of the way, and giving them the tools necessary to create premium LCG® for clients and projects worldwide.

Our ever-growing portfolio of sophisticated LCG® products for architectural, interior, and automotive glass support diverse industries including residential, retail, healthcare, transportation, corporate and hospitality.

The Gauzy Certification Program is onsite at your facility or office, consisting of education, training, and quality verification tools.

This program includes:

- ✓ Education on LCG® technology
- ✓ ATE (Automatic Testing Station) introduction, procedures, training
- ✓ Lamination trials and inspections
- ✓ Connecting and interfacing controllers to LCG®
- ✓ Assistance setting up a show room in your facility
- ✓ Introduction to Marketing & Sales tools and strategies for a specific region or market

Gauzy Partner Flow

Our Liquid Crystal and SPD films, controllers, quality verification tools, and training & certification programs support a turn key smart glass solution for our global partners and projects worldwide.



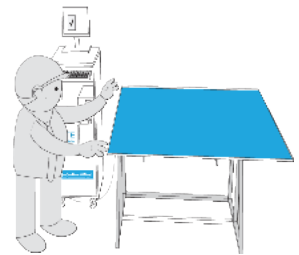
Certification Program

Intensive onsite training at a partner's facility, including education on liquid crystal technology and handling Gauzy's products



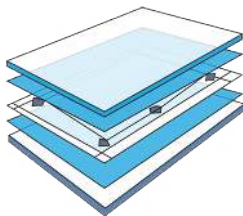
LCG® Film Delivery

LCG® film rolls or cut to sheet orders will be delivered to your facility with a quality verification report



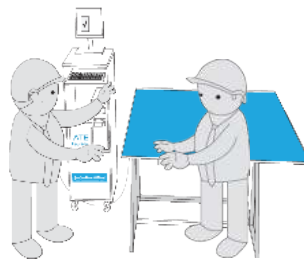
Quality Testing

On site quality testing using our patented ATE prior to lamination



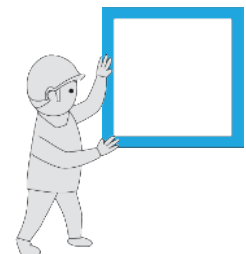
Film Lamination

Raw material films are laminated at a partners factory based on education recieved during the training program



Post Lamination Testing

Laminated film (now LCG®) is tested on the ATE again to ensure and guarentee optimum performance



Open New Markets

Installation of LCG® in sophisticated projects and markets worldwide

**We are big enough to deliver
and small enough to care**

Your dot on our map is waiting.



Automatic Testing Equipment

The ATE (automatic testing equipment) is a patented testing station, designed to help partners test films and LCG[®] before and after the lamination process.

This advanced and easy to use system guarantees the fabrication process and ensures production of the highest quality LCG[®] for customers worldwide.



Fully equipped with software, hardware, optical and visual evaluation tools, the ATE brings a complete solution, covering the most important parameters of LCG[®] fabrication.

- ✓ **Electrical properties:**
current and power consumption
- ✓ **Optical properties:**
light transmittance and haze
- ✓ **Mechanical properties:**
film dimensions

Technical Specifications

Gauzy's ATE includes a glass inspection table and a PC rack with the following technical specifications:

- Maximum load weight: 250kg
- Dimensions with extensions: 282 x 151 x 100 cm
- Led type: 20w/m cold white on aluminum stripe
- Led PS input: 110-240VAC, 50-60Hz, 2A
- Led PS output: 12VDC, 8.33A, up to 100W
- LC Film output voltage: Square wave 70VAC
- DC output voltage: 0 VDC, guaranteed by design

Key Features

User Friendly

Automated for easy testing of LC films before and after lamination in glass.

Power Ramp-Up

Controlled power ramp-up to extend the film lifetime by blowing possible shorts caused by processing and lamination.

Large Panel Support

Holds glass panels up to 3.5m x 1.8m.

Full Film Testability

Measures current consumption, power consumption per sqm, light transmittance, and haze.

Film Protection During Testing

Including over voltage protection to shield the film from any transient in the main AC network and DC blocking to guarantee the film is powered without any DC component in the voltage supply.

Built-In Backlight

Facilitates visual inspection with a built-in LED backlight.

Fully Equipped

Includes computer cabinet, windows PC and monitor along with proprietary optical and electronic testing tools.

Online Synchronization

Pre and post lamination test results are automatically transmitted to Gauzy HQ for logging and quality review.

Detailed Reports

All information and test results are documented in a detailed reporting system with back-logging.

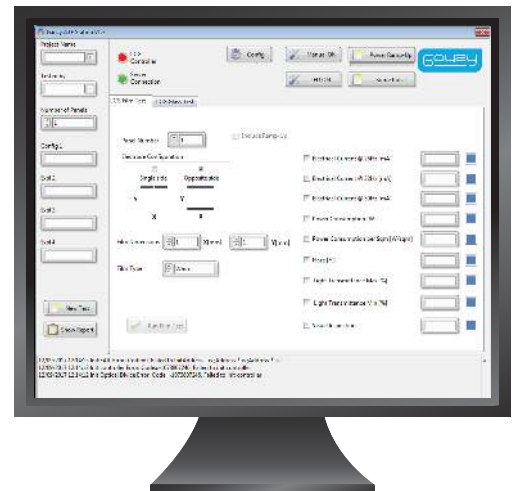
Gauzy Support

Complete ATE installation and training, technical support and product warranty.



Easy to Use Interface with Detailed Reports and Tracking:

- ✔ **Pre-Lamination Testing (film)**
 Extensive, automated series of tests performed on the film, based on dimensions and busbar configuration.
- ✔ **Post-Lamination Testing (LCG®)**
 Detailed reports are generated and adjusted optical tests are performed on each laminated LCG® panel.
- ✔ **All-In-One SW & HW Testing**
 Consists of initial power ramp-up, electrical current & consumption measurements, and visual & optical inspection.





Gauzy Offices:

Gauzy HQ:

14 Hathiya Street, Tel Aviv - Yafo, 6816914
Israel ; +972-72-250-0385

Gauzy Germany:

58 Rosenfelder Str. 72189 Vöhringen
Germany ; +49-69-254 26 299

Gauzy USA:

Collin Creek II 840 F Ave, suite 104, Plano, Texas 75074
USA ; +1 817 800 9697

Gauzy China:

233 Science Avenue, Guangzhou Development District, Guangzhou,
China ; +86 1382629368